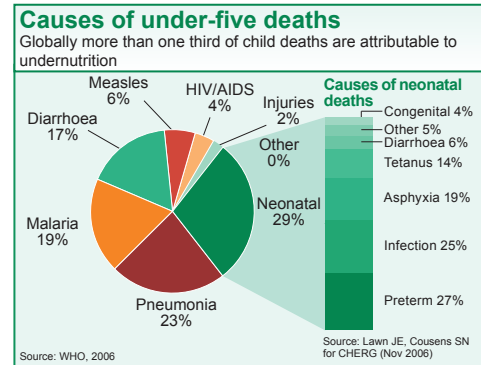
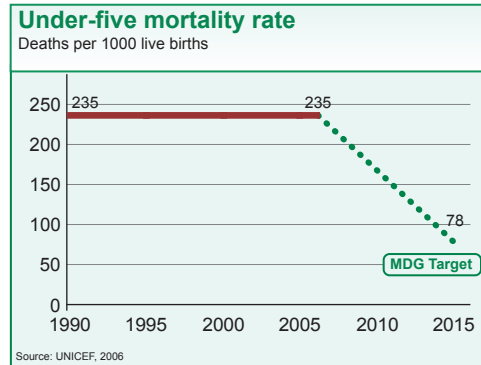




## DEMOGRAPHICS

Total population (000)	3,579 (2006)
Total under-five population (000)	690 (2006)
Births (000)	184 (2006)
Birth registration (%)	---
Under-five mortality rate (per 1000 live births)	235 (2006)
Infant mortality rate (per 1000 live births)	157 (2006)
Neonatal mortality rate (per 1000 live births)	66 (2006)
Total under-five deaths (000)	43 (2006)
Maternal mortality ratio (per 100,000 live births)	1,200 (2005)
Lifetime risk of maternal death (1 in N)	12 (2005)
Total maternal deaths	2,100 (2005)

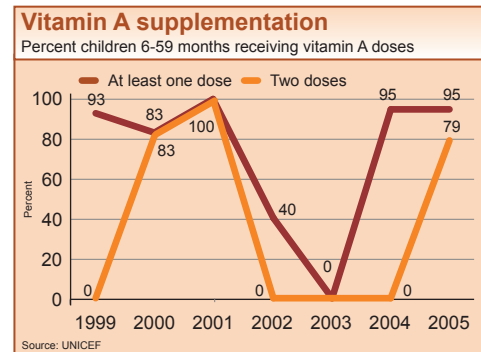
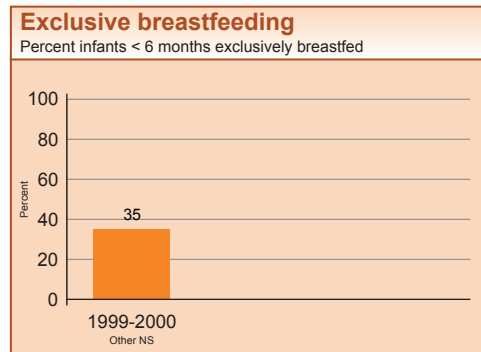
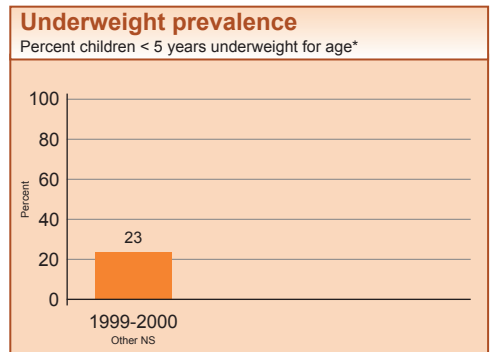


## INTERVENTION COVERAGE FOR MOTHERS, NEWBORNS AND CHILDREN

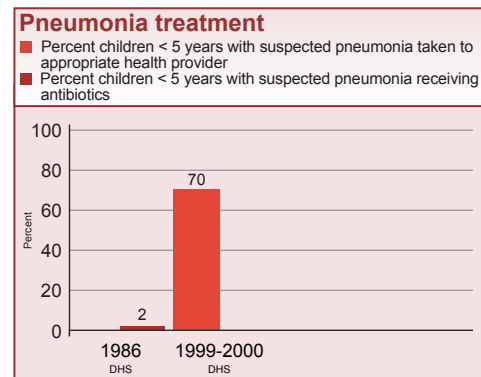
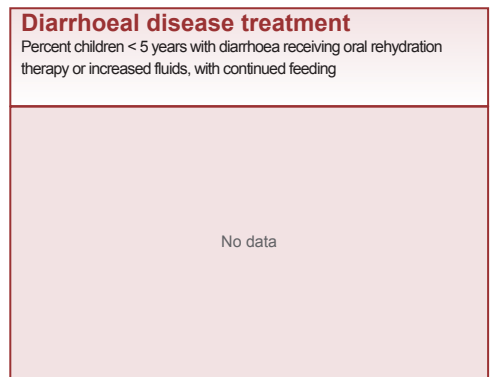
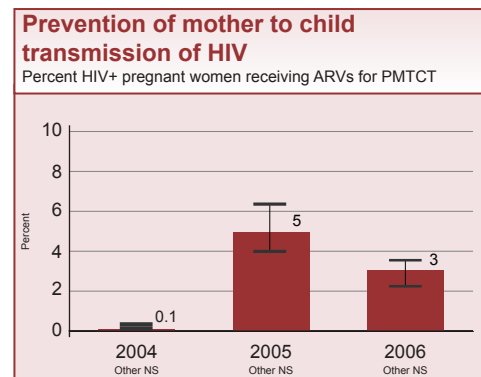
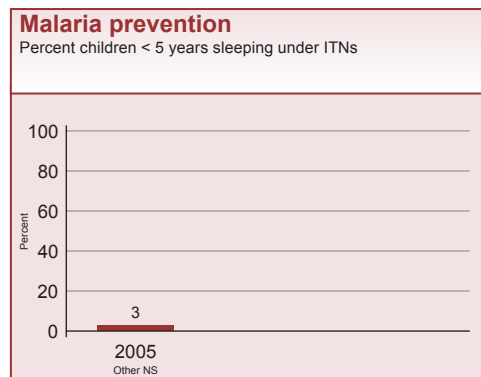
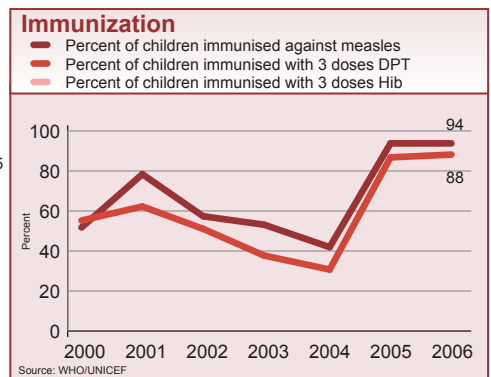
### NUTRITION

Stunting prevalence (moderate and severe, %) 45 (1999-2000)  
Wasting prevalence (moderate and severe, %) 7 (1999-2000)

Complementary feeding rate (6-9 months, %) 70 (1999-2000)  
Low birthweight incidence (%) ---

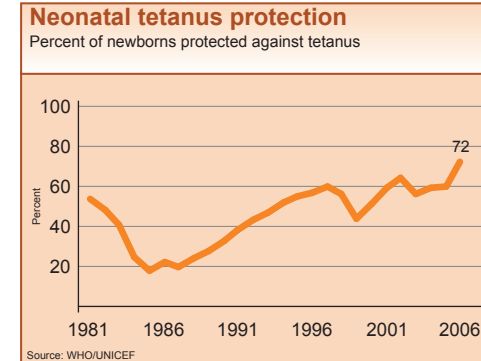
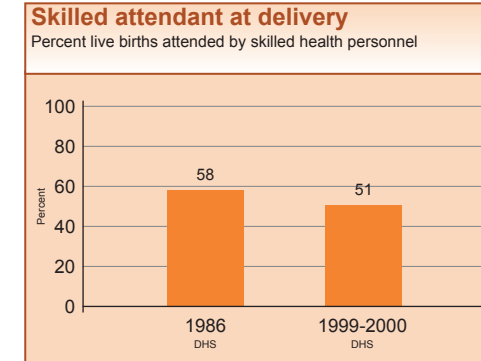
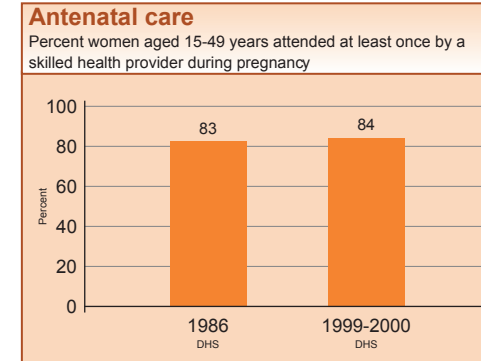
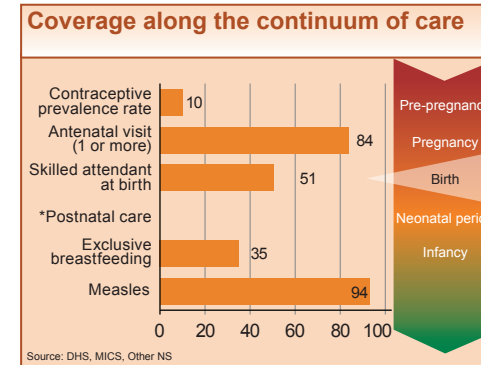
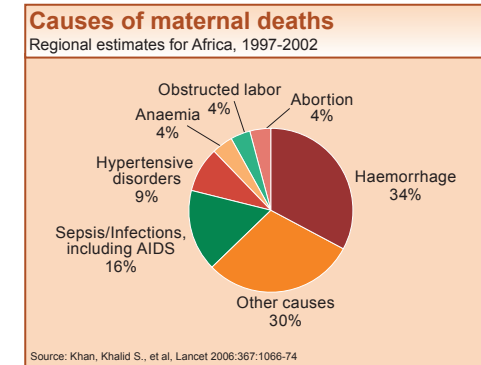


## CHILD HEALTH

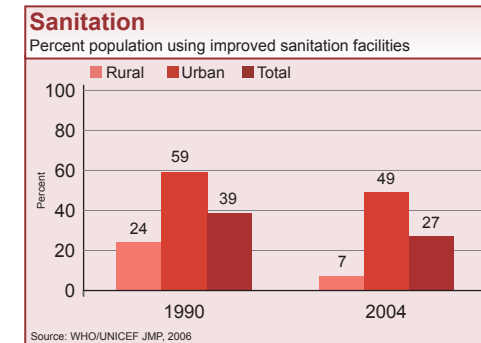
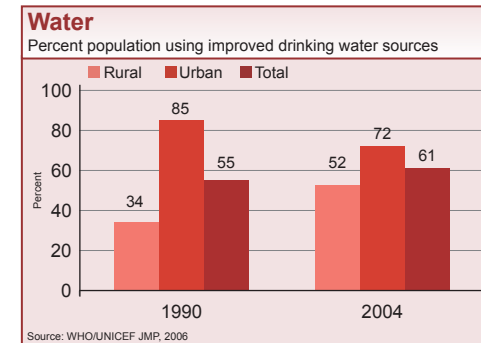


## MATERNAL AND NEWBORN HEALTH

Unmet need for family planning (%) ---  
Antenatal visits for woman (4 or more visits, %) ---  
Intermittent preventive treatment for malaria (%) ---  
C-section rate (total, urban, rural, %) ---, ---, ---  
(Minimum target is 5% and maximum target is 15%) ---, ---, ---  
Early initiation of breastfeeding (within 1 hr of birth, %) ---  
Postnatal visit for baby (within 2 days for home births, %) ---



## WATER AND SANITATION



## POLICIES

International Code of Marketing of Breastmilk Substitutes	---
New ORS formula and zinc for management of diarrhoea	Partial
Community treatment of pneumonia with antibiotics	No
IMCI adapted to cover newborns 0-1 week of age	Yes
Costed implementation plan(s) for maternal, newborn and child health available	Yes
Midwives be authorised to administer a core set of life saving interventions	Yes
Maternity protection in accordance with ILO Convention 183	No
Specific notification of maternal deaths	Partial

## SYSTEMS

### Financial Flows and Human Resources

Per capita total expenditure on health (US\$)	22 (2007)
General government expenditure on health as % of total government expenditure (%)	20 (2007)
Out-of-pocket expenditure as % of total expenditure on health (%)	36 (2007)
Density of health workers (per 1000 population)	0.3 (2004)
Official Development Assistance to child health per child (US\$)	8 (2005)
Official Development Assistance to maternal and neonatal health per live birth (US\$)	8 (2005)
National availability of Emergency Obstetric Care services (% of recommended minimum)	---

## EQUITY

