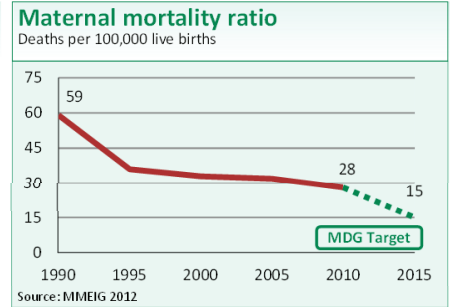
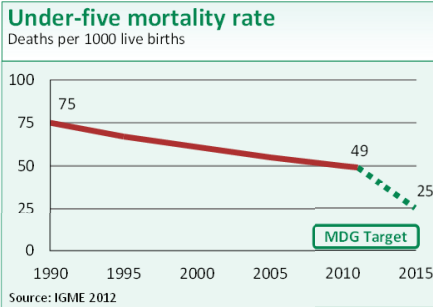




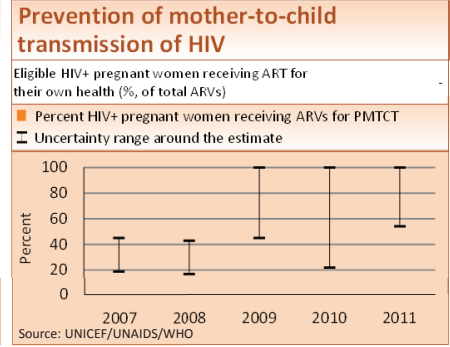
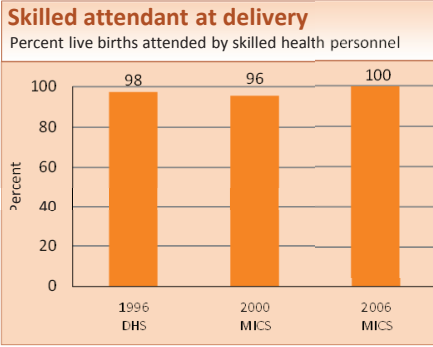
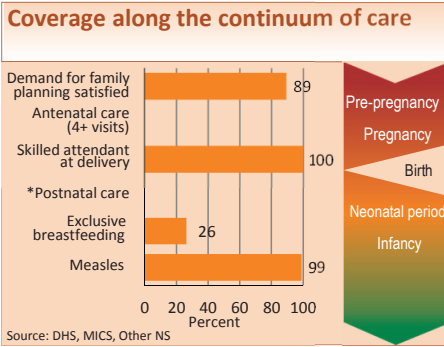
**DEMOGRAPHICS**

Total population (000)	27,760	(2011)
Total under-five population (000)	2,806	(2011)
Births (000)	589	(2011)
Birth registration (%)	100	(2006)
Total under-five deaths (000)	30	(2011)
Neonatal deaths: % of all under-5 deaths	30	(2011)
Neonatal mortality rate (per 1000 live births)	15	(2011)
Infant mortality rate (per 1000 live births)	42	(2011)
Stillbirth rate (per 1000 total births)	6	(2009)
Total maternal deaths	160	(2010)
Lifetime risk of maternal death (1 in N)	1,400	(2010)
Total fertility rate (per woman)	2.3	(2011)
Adolescent birth rate (per 1000 women)	26	(2006)

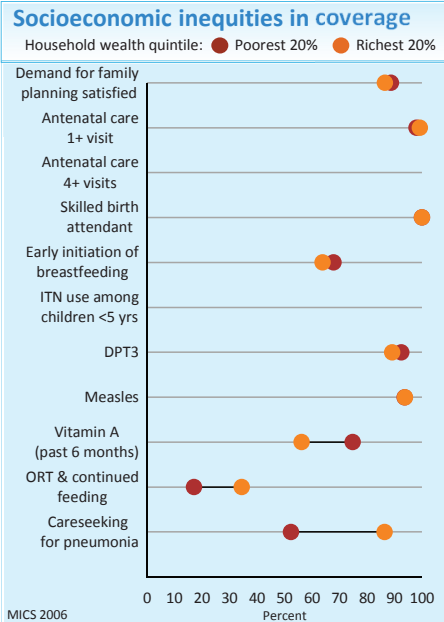


Note: MDG target calculated by Countdown to 2015.

**MATERNAL AND NEWBORN HEALTH**

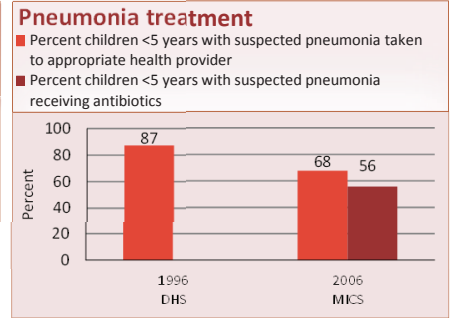
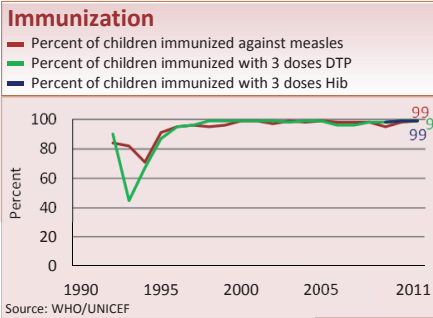


**EQUITY**



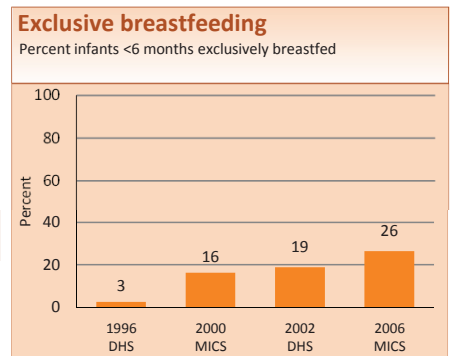
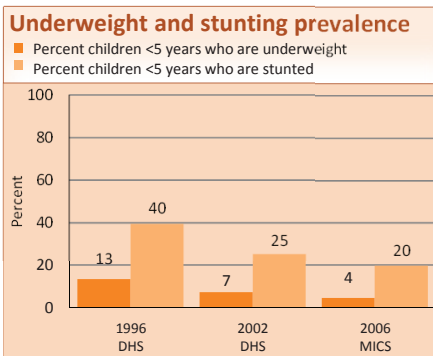
Coverage levels are shown for the poorest 20% (red circles) and the richest 20% (orange circles). The longer the line between the two groups, the greater the inequality. These estimates may differ from other charts due to differences in data sources.

**CHILD HEALTH**



**NUTRITION**

Wasting prevalence (moderate and severe, %)	4	(2006)	Early initiation of breastfeeding (within 1 hr of birth, %)	67	(2006)
Low birthweight incidence (moderate and severe, %)	5	(2006)	Introduction of solid, semi-solid/soft foods (%)	47	(2006)
			Vitamin A two dose coverage (%)	95	(2011)



Note: Based on 2006 WHO reference population