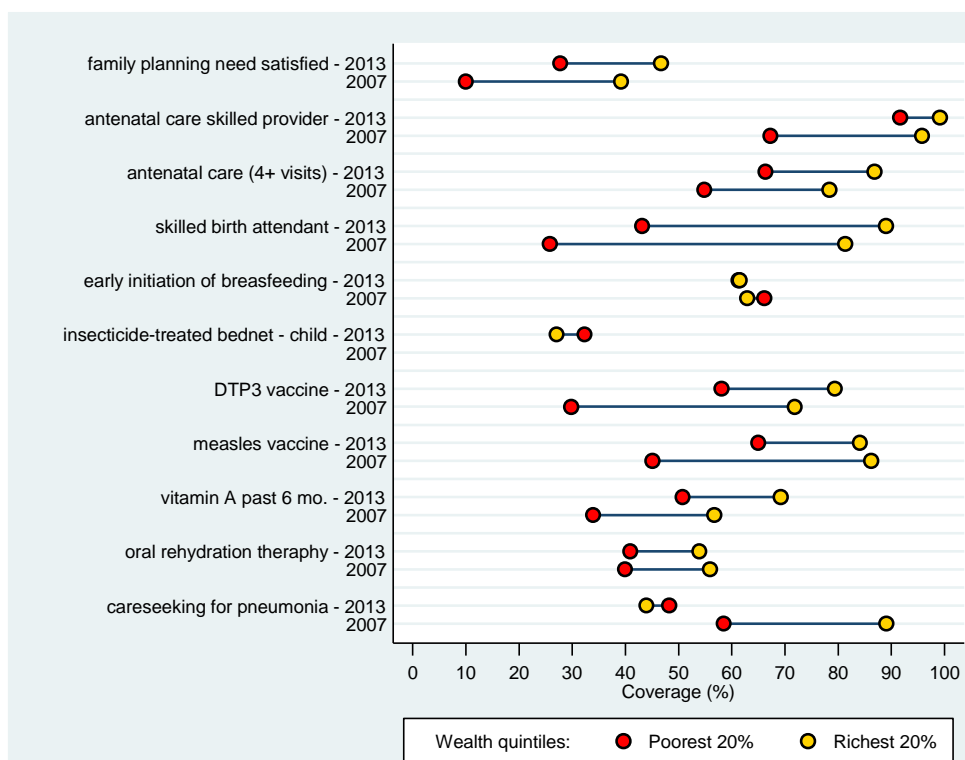


Liberia DHS 2013

Table - Coverage of Countdown indicators at national level and by key equity stratifiers. Please see the example cover profile for guidance on interpreting the table and graphs.

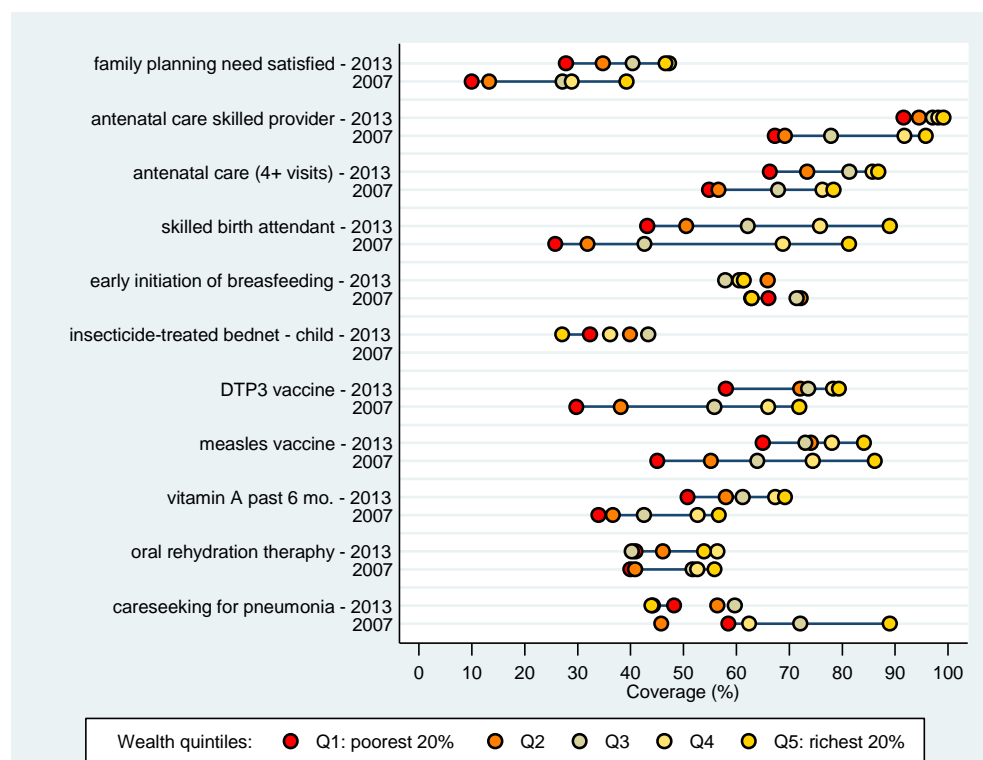
	Family planning need satisfied	Contraceptive prevalence rate	Antenatal care 1+ visits with skilled provider	Antenatal care 4+ visits, any provider	Skilled attendant at delivery	C-section rate	Early initiation of breastfeeding	Postnatal care for babies born at home	Postnatal care for all babies	BCG vaccine	DTP3 vaccine	Measles vaccine	Vitamin A in last 6 mos.	ORT and continued feeding	ORS (packet or pre-packaged)	Care seeking for pneumonia	ITN use by children	Improved drinking water source	Co-coverage (less than 3 interventions)	Co-coverage (6 or more interventions)	Composite coverage index	
National	39.4	20.2	95.9	78.1	61.1	3.9	61.4	23.0	34.6	93.9	71.5	74.2	60.2	46.4	60.4	50.7	36.3	73.0	5.6	67.8	61.4	
Wealth quintiles																						
Q1	27.8	13.5	91.6	66.4	43.2	2.2	61.3	20.9	28.8	86.8	58.0	65.0	50.8	40.9	56.8	48.3	32.3	37.0	14.8	41.8	52.0	
Q2	34.7	17.1	94.5	73.4	50.5	3.1	65.9	22.5	31.1	92.6	72.1	74.1	58.0	46.1	66.1	56.4	39.9	66.3	6.9	60.4	59.7	
Q3	40.4	21.6	97.1	81.3	62.2	3.3	57.9	20.7	34.9	95.9	73.6	73.0	61.2	40.2	70.4	59.7	43.3	82.9	2.0	76.6	62.4	
Q4	47.3	26.2	98.2	85.7	75.8	3.4	60.6	25.3	34.6	97.5	78.3	78.1	67.4	56.4	59.3	44.3	36.1	88.2	0.5	83.7	67.2	
Q5	46.6	23.3	99.1	86.8	89.0	9.6	61.4	37.2	48.7	98.9	79.4	84.1	69.2	53.9	44.1	44.0	27.1	90.7	0.0	89.7	68.8	
Equity indicators																						
ratio Q5/Q1	1.7	1.7	1.1	1.3	2.1	4.3	1.0	1.8	1.7	1.1	1.4	1.3	1.4	1.3	0.8	0.9	0.8	2.4	0.0	2.1	1.3	
difference Q5 - Q1	18.9	9.8	7.5	20.5	45.8	7.3	0.1	16.3	19.9	12.1	21.4	19.1	18.4	13.0	-12.7	-4.3	-5.2	53.6	-14.8	47.9	16.8	
Concentration index	11.4	12.6	1.6	5.8	15.1	27.0	-0.3	6.6	9.3	2.7	6.4	5.0	6.2	6.0	-1.5	-0.4	-0.9	15.0	-58.5	15.3	5.3	
SII	24.9	14.7	10.5	27.0	52.9	6.1	-1.1	9.0	18.8	16.9	25.6	21.0	23.0	17.3	-6.3	-5.5	-2.5	62.2	-22.1	57.2	20.4	
Maternal education																						
none	34.7	15.3	93.3	70.6	49.3	2.2	61.9	21.5	29.2	89.5	68.0	66.6	57.0	42.8	59.9	46.6	37.3	NA	8.8	58.1	56.4	
primary	36.3	19.7	96.8	79.2	61.8	3.9	62.7	19.9	32.8	94.2	65.7	71.1	61.5	49.6	64.5	53.8	36.0	NA	5.1	66.2	60.4	
secondary+	47.5	28.6	98.3	86.5	78.1	6.3	59.6	31.7	43.2	98.7	81.5	86.1	63.7	48.1	56.4	53.9	35.3	NA	1.2	84.6	68.7	
Child's sex																						
male	NA	NA	95.5	77.0	61.5	5.0	60.5	21.6	35.2	93.1	69.2	73.8	60.2	46.9	58.2	56.5	37.0	NA	5.7	68.1	NA	
female	NA	NA	96.3	79.3	60.7	2.7	62.4	24.4	33.8	94.7	74.0	74.6	60.2	46.0	62.8	44.0	35.6	NA	5.5	67.6	NA	
Area of residence																						
urban	44.0	23.2	98.0	83.4	72.7	5.1	61.9	24.3	38.7	96.7	75.7	77.6	65.5	51.8	57.2	49.4	35.2	85.8	0.7	80.4	65.6	
rural	33.7	16.8	93.4	72.0	49.6	2.7	60.8	22.1	30.2	90.7	66.8	70.4	54.9	41.9	63.1	51.7	37.4	56.6	10.6	55.2	56.9	
Country region																						
01 North Western	38.5	20.6	94.8	76.8	51.9	2.2	63.1	24.8	37.8	94.5	81.7	81.5	67.9	53.0	79.6	53.0	49.3	67.8	3.0	69.6	62.9	
02 South Central	46.4	24.2	97.7	81.5	71.3	5.0	61.0	18.5	33.9	97.9	76.8	77.2	67.2	50.7	53.3	47.8	32.4	78.7	2.8	78.1	65.5	
03 South Eastern A	37.9	20.5	92.7	73.0	65.3	2.5	49.2	17.5	28.9	89.4	59.3	66.7	49.2	38.9	54.1	55.5	24.8	56.3	14.0	49.1	58.9	
04 South Eastern B	40.1	22.4	90.1	59.8	56.7	4.2	39.9	14.4	24.0	78.9	52.0	60.0	35.0	46.3	66.7	52.6	22.0	64.6	23.3	36.0	56.4	
05 North Central	28.3	13.6	95.8	79.2	51.4	3.2	68.9	30.1	38.0	92.6	68.2	72.6	57.4	41.7	64.1	51.4	42.9	71.3	3.8	66.3	56.7	

Note: the maximum number of interventions for the co-coverage indicator for this survey is 9



Source: Liberia (DHS 2007 & DHS 2013)

Coverage levels are shown for the poorest 20% (red circles) and the richest 20% (yellow circles). The longer the line between the two groups, the greater the absolute inequality. For quintiles with small sample sizes, estimates are not shown in the graphs.

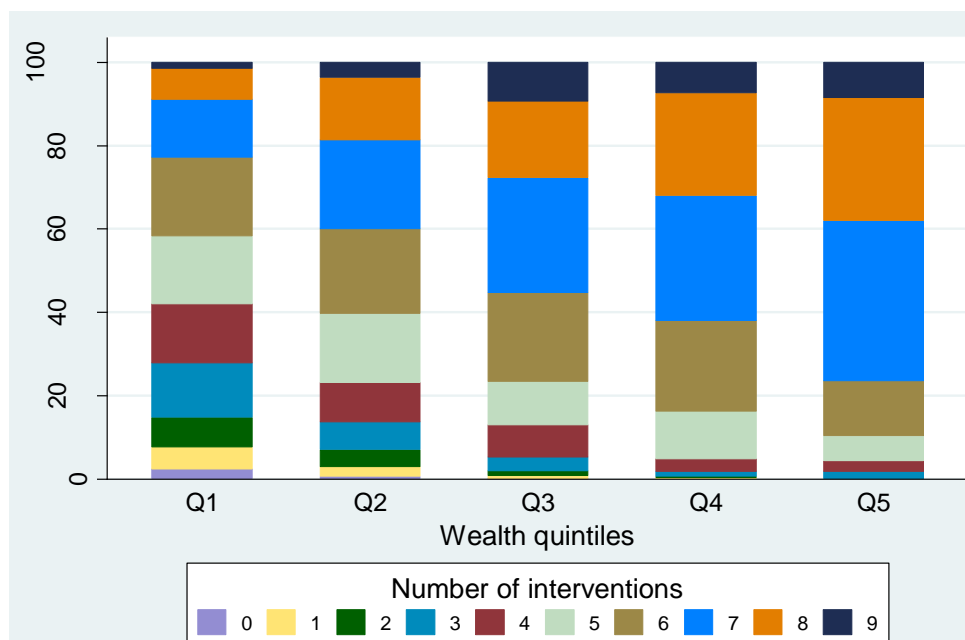


Source: Liberia (DHS 2007 & DHS 2013)

The horizontal lines connect the richest (yellow circles) and poorest (red circles) quintiles. The longer the line between the two groups, the greater the absolute inequality. For quintiles with small sample sizes, estimates are not shown in the graphs.

Figure 1 - Coverage levels in the poorest and richest quintiles for selected interventions along the continuum of care.

Figure 2 - Coverage levels in the five wealth quintiles for selected interventions along the continuum of care.



Source: Liberia DHS 2013

The maximum number of interventions for this survey is 9.



Source: Liberia DHS 2013

Figure 3 - Co-coverage of health interventions: percentage of children aged 1-4 years according to the number of key child-survival interventions received, by wealth quintile.

Figure 4 - Composite coverage of selected interventions and corresponding coverage gap (how much is needed to reach universal coverage), by wealth quintile.