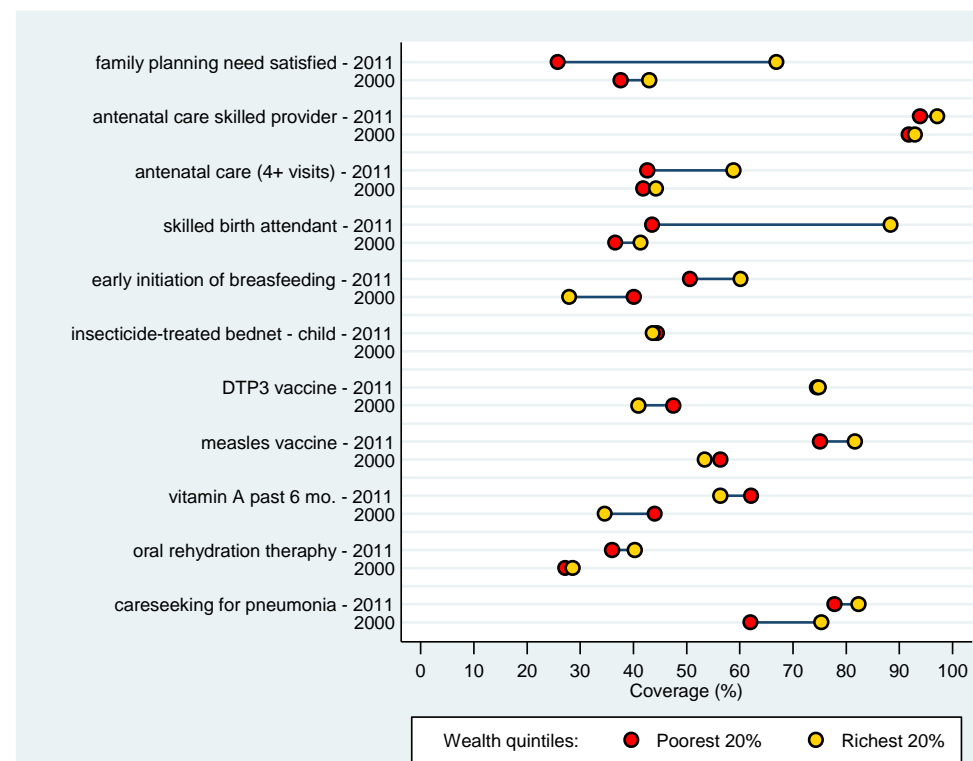


Uganda DHS 2011

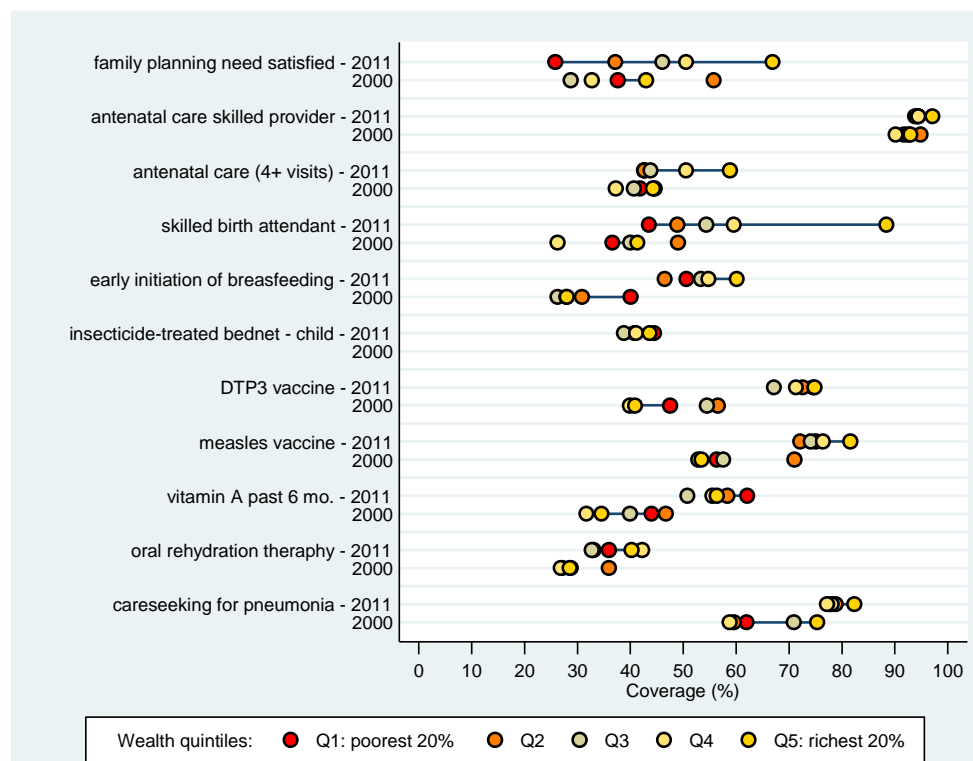
Table - Coverage of Countdown indicators at national level and by key equity stratifiers. Please see the example cover profile for guidance on interpreting the table and graphs.

	Family planning need satisfied	Contraceptive prevalence rate	Antenatal care 1+ visits with skilled provider	Antenatal care 4+ visits, any provider	Skilled attendant at delivery	C-section rate	Early initiation of breastfeeding	Postnatal care for babies born at home	Postnatal care for all babies	BCG vaccine	DTP3 vaccine	Measles vaccine	Vitamin A in last 6 mos.	ORT and continued feeding	ORS (packet or pre-packaged)	Care seeking for pneumonia	ITN use by children	Improved drinking water source	Co-coverage (less than 3 interventions)	Co-coverage (6 or more interventions)	Composite coverage index	
National	46.7	30.0	94.9	47.6	58.0	5.3	53.0	5.6	10.9	93.7	72.2	75.8	56.8	36.3	43.5	78.7	41.8	69.6	2.9	71.9	65.0	
Wealth quintiles																						
Q1	25.8	14.7	93.9	42.6	43.5	2.2	50.6	7.1	10.8	95.6	74.5	75.1	62.1	36.0	42.9	77.8	44.5	73.3	3.1	71.8	58.0	
Q2	37.2	23.2	94.5	42.6	48.9	3.2	46.5	6.6	7.9	94.6	72.6	72.1	58.3	33.0	40.4	78.9	40.8	65.1	2.4	65.4	61.0	
Q3	46.1	29.3	94.3	43.8	54.4	3.9	53.4	3.2	7.4	92.4	67.2	74.1	50.8	32.7	40.9	78.1	38.8	59.3	5.1	64.1	63.1	
Q4	50.6	35.0	94.5	50.5	59.6	5.7	54.8	2.1	8.8	90.6	71.3	76.4	55.5	42.2	50.7	77.2	41.1	67.2	2.8	74.1	66.4	
Q5	66.9	46.2	97.1	58.8	88.4	12.6	60.1	13.4	20.2	94.7	74.8	81.6	56.4	40.2	45.4	82.3	43.7	83.1	0.9	85.1	75.7	
Equity indicators																						
ratio Q5/Q1	2.6	3.1	1.0	1.4	2.0	5.8	1.2	1.9	1.9	1.0	1.0	1.1	0.9	1.1	1.1	1.1	1.0	1.1	0.3	1.2	1.3	
difference Q5 - Q1	41.1	31.5	3.3	16.2	44.9	10.4	9.5	6.4	9.4	-0.9	0.3	6.5	-5.8	4.3	2.5	4.5	-0.8	9.8	-2.3	13.3	17.7	
Concentration index	18.0	22.0	0.5	6.9	14.3	36.4	4.2	-10.7	13.8	-0.5	-0.3	1.9	-2.3	3.3	2.7	0.6	-0.1	2.5	-10.0	3.5	5.0	
SII	47.0	37.8	3.4	20.2	47.4	12.1	13.7	-3.9	8.7	-3.2	-0.9	8.3	-8.1	7.0	6.4	3.2	-1.2	10.8	-1.9	16.2	20.3	
Maternal education																						
none	34.5	17.9	92.3	44.7	37.7	2.6	52.9	5.1	7.9	92.5	70.6	72.6	53.8	36.1	47.5	69.6	38.5	NA	6.2	63.4	57.5	
primary	42.4	28.0	94.8	45.3	54.8	4.0	51.4	5.7	8.9	93.8	69.9	73.7	55.4	35.6	41.6	79.9	40.4	NA	2.7	68.5	63.1	
secondary+	64.4	44.2	96.6	55.6	80.8	10.9	57.4	5.6	17.7	94.0	79.3	83.1	63.0	39.2	47.9	81.6	48.0	NA	0.9	87.7	74.3	
Child's sex																						
male	NA	NA	95.4	47.5	58.2	5.4	51.8	5.8	11.0	94.1	72.6	74.8	57.1	34.6	40.5	74.9	41.0	NA	3.0	72.5	NA	
female	NA	NA	94.3	47.7	57.8	5.1	54.3	5.4	10.7	93.3	71.9	76.6	56.5	38.2	46.8	82.8	42.6	NA	2.7	71.3	NA	
Area of residence																						
urban	66.9	45.8	97.4	57.0	89.1	13.7	58.1	18.6	20.9	96.3	75.6	80.8	57.7	43.3	46.2	80.8	43.7	87.5	0.4	85.2	76.2	
rural	42.4	26.9	94.4	45.8	52.8	3.9	52.0	5.1	9.1	93.3	71.7	75.0	56.7	35.2	43.1	78.4	41.5	66.5	3.3	69.7	62.9	
Country region																						
01 kampala	74.3	48.2	98.0	65.3	93.0	17.8	58.9	ND	29.1	94.6	74.0	82.0	50.7	38.2	46.3	87.2	44.9	89.2	0.0	85.4	78.3	
02 central 1	58.5	37.3	87.8	47.7	62.0	7.8	48.8	1.2	10.6	85.2	66.4	75.0	36.2	44.1	37.4	78.7	36.7	49.0	8.1	59.8	66.6	
03 central 2	48.8	33.7	94.1	46.6	69.9	5.8	65.1	2.1	7.7	94.5	61.7	70.7	44.1	40.5	50.6	78.9	42.6	65.5	2.5	64.5	65.8	
04 east central	43.3	32.0	91.2	44.5	67.1	4.1	63.7	0.8	8.3	95.5	55.4	71.4	70.8	36.0	56.2	78.3	24.0	83.8	1.5	75.3	62.2	
05 eastern	40.5	26.1	94.3	37.9	51.9	2.5	45.6	7.2	13.8	97.5	74.9	76.8	71.0	30.6	37.9	80.0	42.5	86.5	1.2	79.8	62.5	
06 north	36.0	23.9	98.7	43.3	53.4	2.5	36.8	10.3	13.0	94.0	74.3	72.0	59.4	43.5	46.3	80.5	50.2	76.3	1.3	76.6	63.7	
07 karamoja	27.6	7.8	96.6	55.5	30.8	1.1	66.2	15.7	18.6	99.8	89.5	90.6	73.7	63.5	77.3	86.0	47.8	90.3	1.1	84.1	64.7	
08 west-nile	25.3	14.6	97.6	64.2	58.5	4.6	29.0	13.5	11.1	98.5	82.0	77.7	53.7	27.1	43.4	81.3	58.1	74.0	1.3	79.4	61.1	
09 western	51.8	32.7	95.9	47.7	55.8	5.5	58.9	4.0	9.0	95.4	77.8	81.7	60.0	32.4	37.9	76.0	49.5	65.9	2.3	72.4	66.6	
10 southwest	44.5	29.6	97.6	45.9	41.5	4.9	56.0	0.9	1.2	85.9	80.9	71.4	44.1	29.9	22.0	66.8	34.3	39.5	7.4	54.3	61.3	

Note: the maximum number of interventions for the co-coverage indicator for this survey is 9



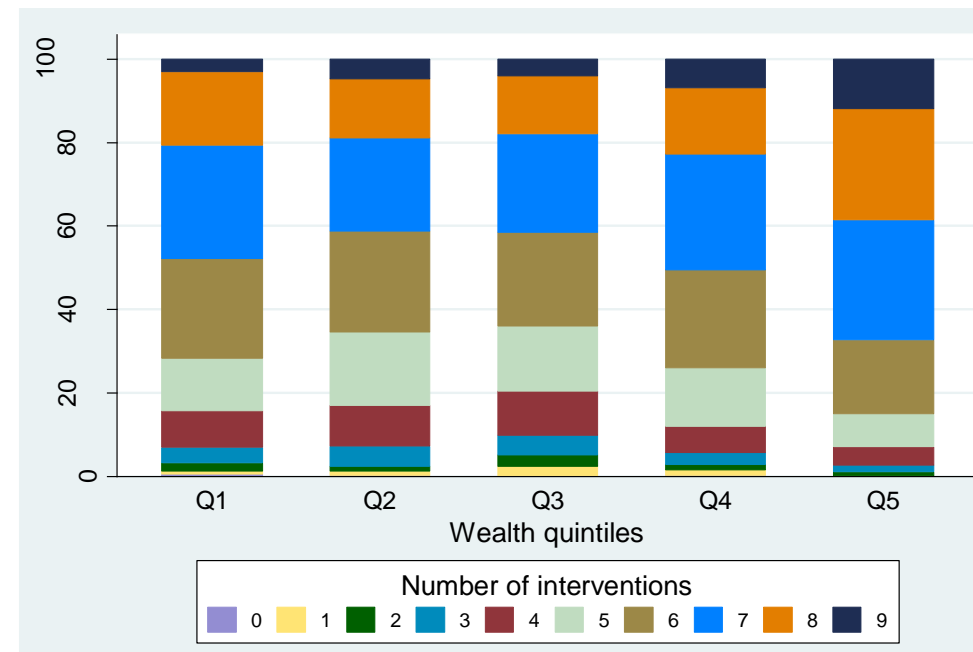
Source: Uganda (DHS 2000 & DHS 2011)
Coverage levels are shown for the poorest 20% (red circles) and the richest 20% (yellow circles). The longer the line between the two groups, the greater the absolute inequality. For quintiles with small sample sizes, estimates are not shown in the graphs.



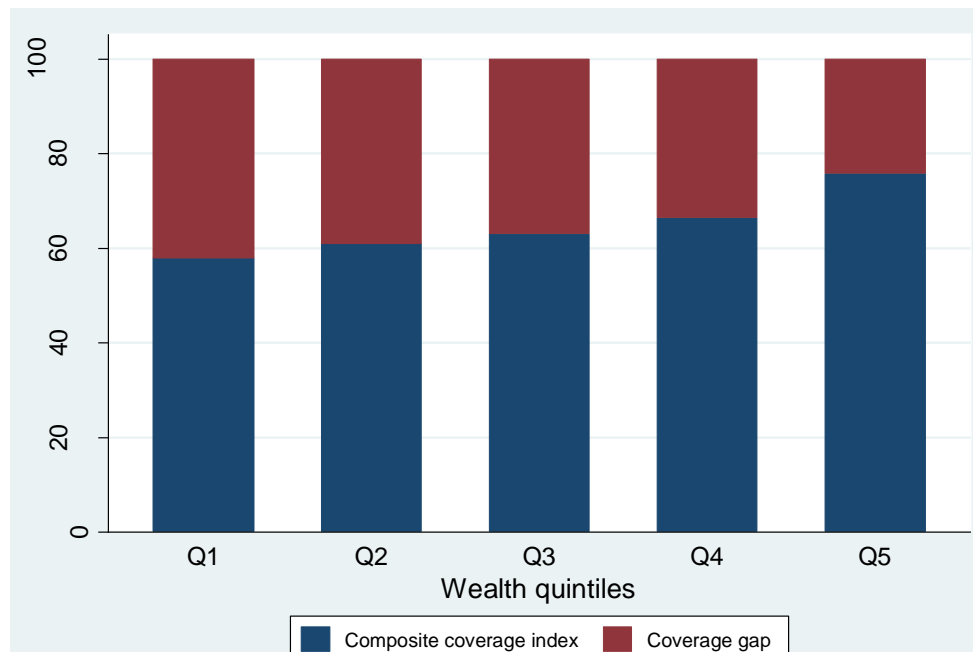
Source: Uganda (DHS 2000 & DHS 2011)
The horizontal lines connect the richest (yellow circles) and poorest (red circles) quintiles. The longer the line between the two groups, the greater the absolute inequality. For quintiles with small sample sizes, estimates are not shown in the graphs.

Figure 1 - Coverage levels in the poorest and richest quintiles for selected interventions along the continuum of care.

Figure 2 - Coverage levels in the five wealth quintiles for selected interventions along the continuum of care.



Source: Uganda DHS 2011
The maximum number of interventions for this survey is 9.



Source: Uganda DHS 2011

Figure 3 - Co-coverage of health interventions: percentage of children aged 1-4 years according to the number of key child-survival interventions received, by wealth quintile.

Figure 4 - Composite coverage of selected interventions and corresponding coverage gap (how much is needed to reach universal coverage), by wealth quintile.