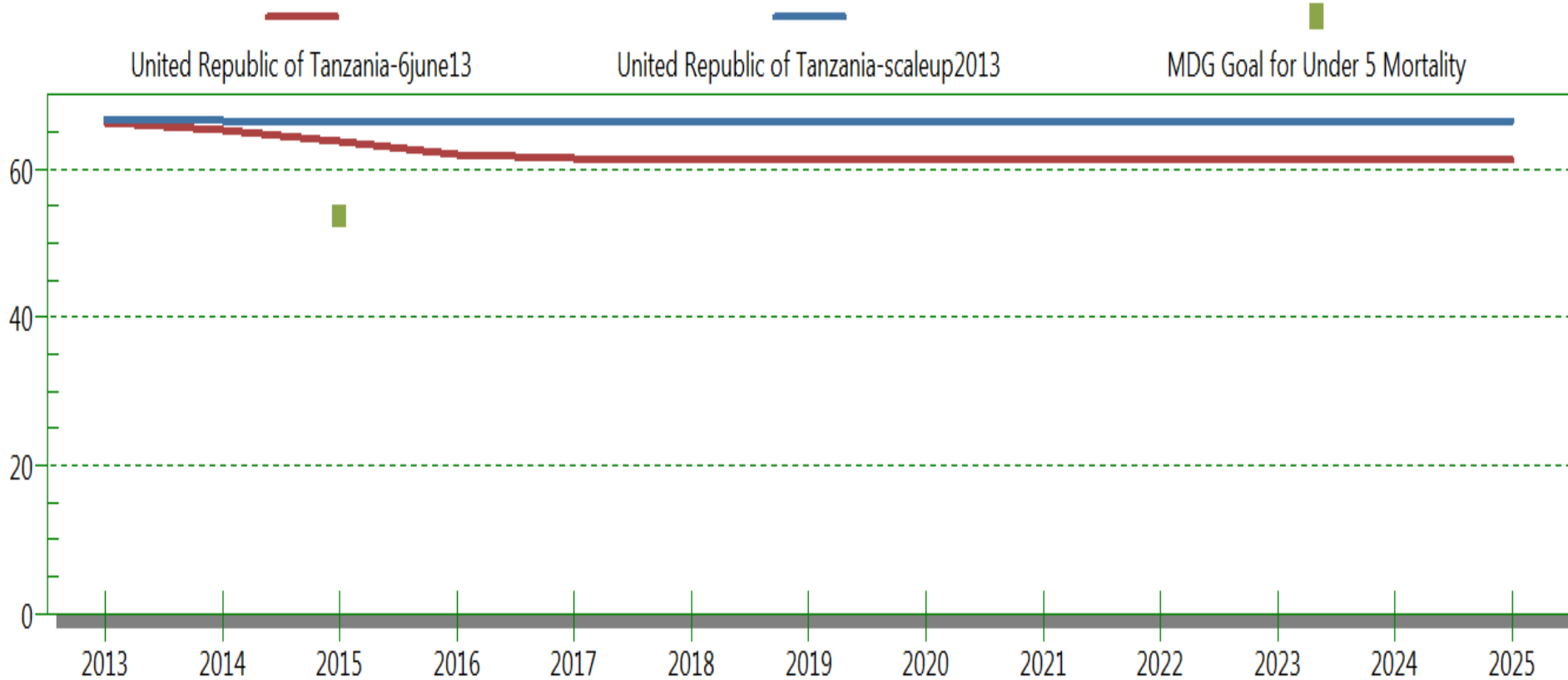


Countdown Training Presentation Tanzania

Pelotas June 17-21

The effect of scaling-up of pneumonia and severe wasting management interventions on under5 mortality rate in Tanzania

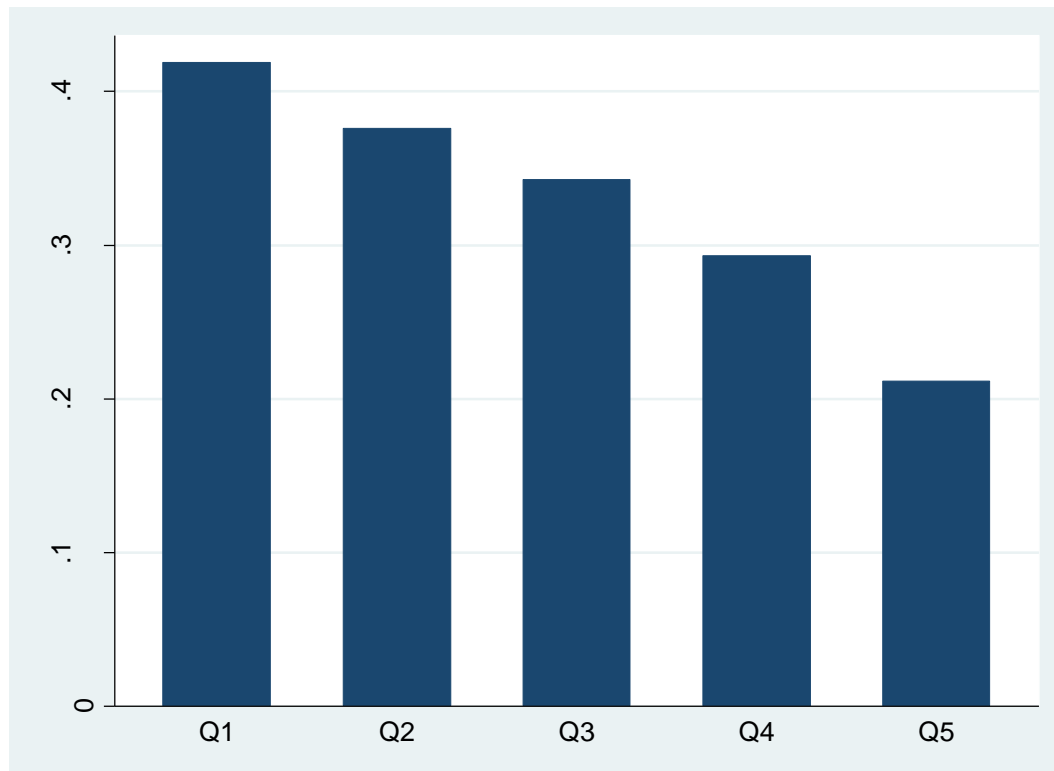
Under five mortality rate (deaths per 1,000 live births)



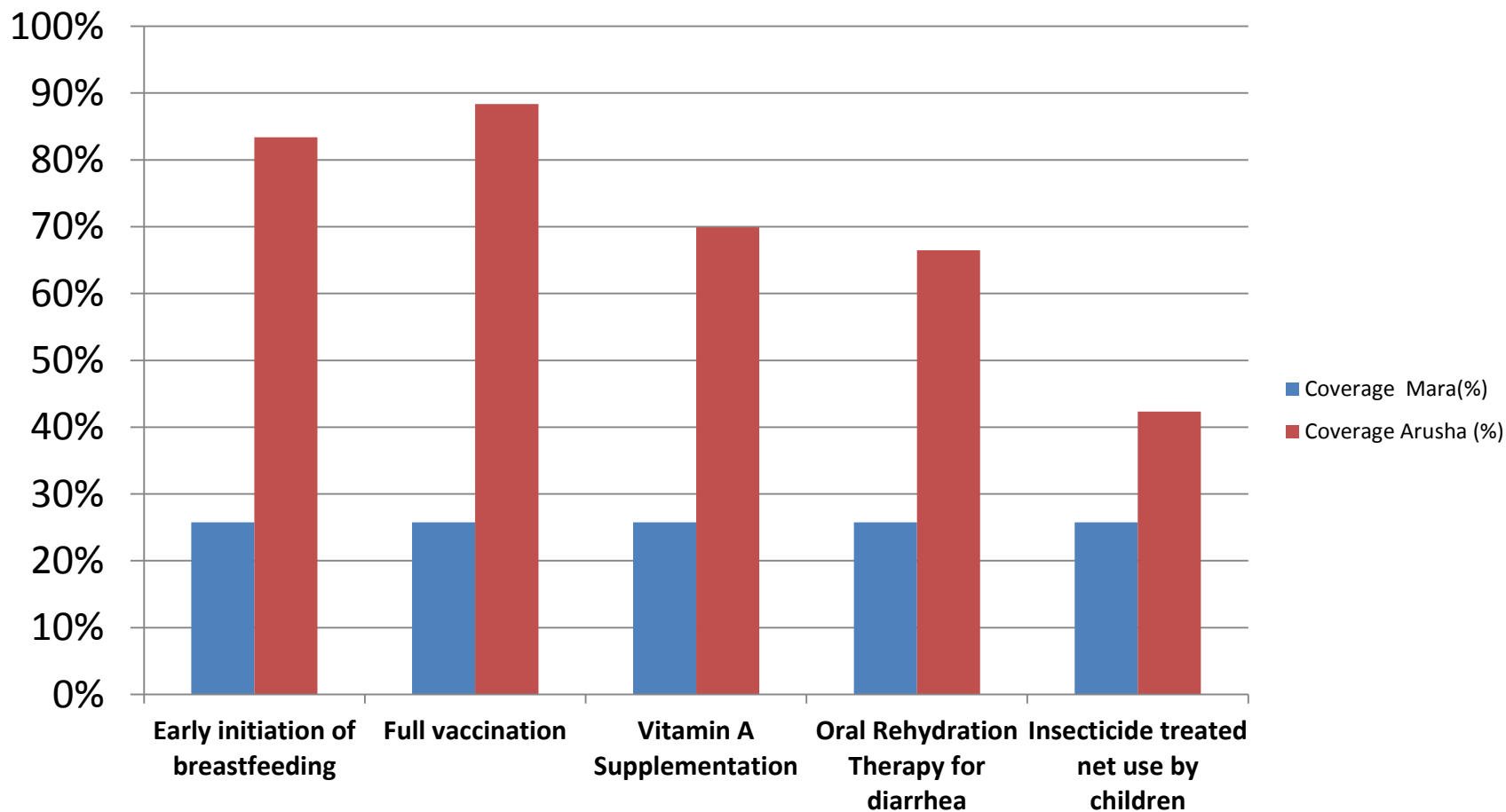
The effect of scaling up of key under-five interventions in Tanzania 2013-2025

Year	Baseline 2013	2025
2013	66.34	66.89
2014	65.31	66.56
2015	63.84	66.37
2016	61.93	66.32
2017	61.52	66.31
2018	61.31	66.31
2019	61.15	66.3
2020	61.09	66.3
2021	61.09	66.3
2022	61.09	66.3
2023	61.11	66.32
2024	61.16	66.37
2025	61.22	66.44

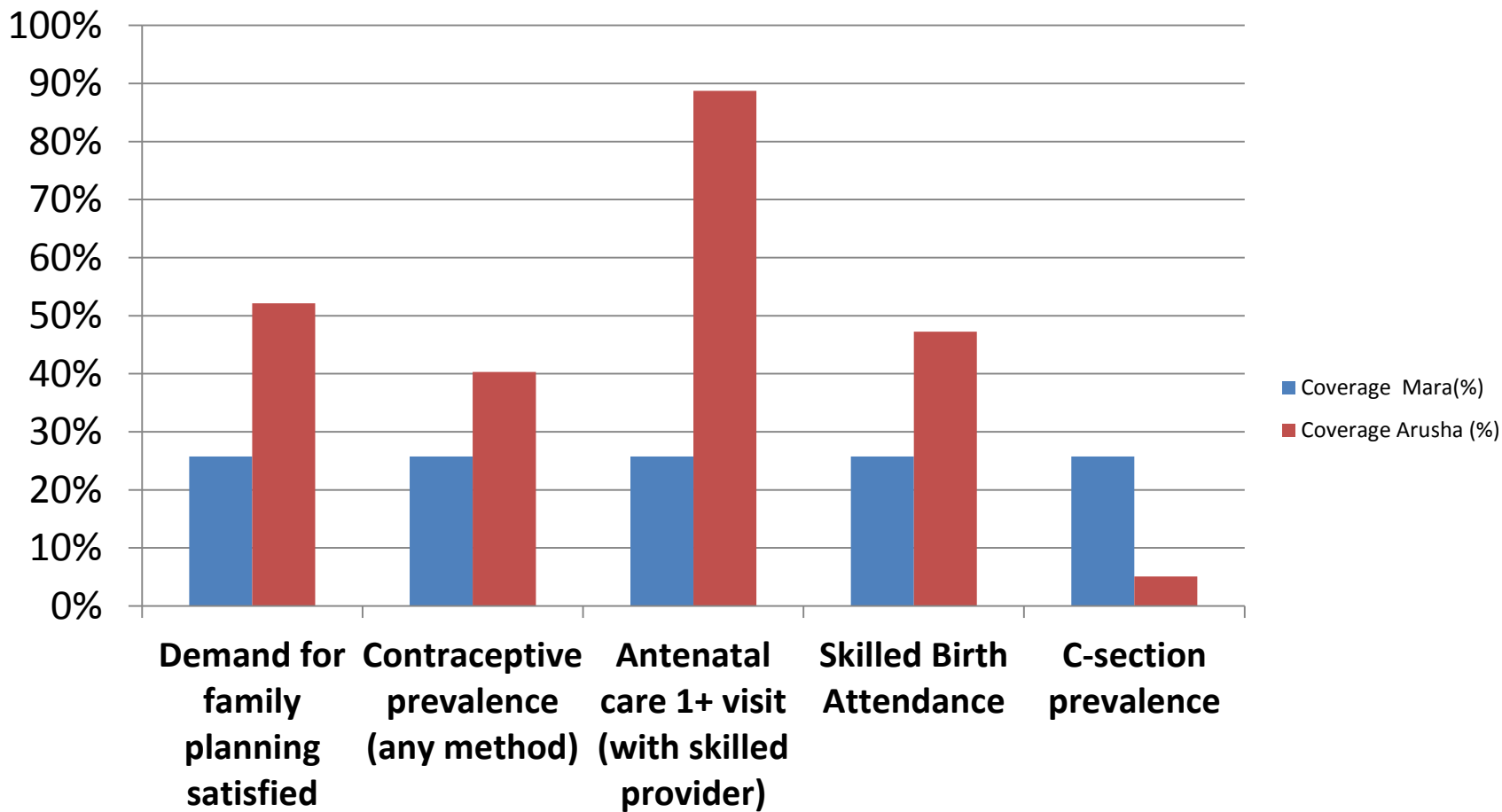
Mean stunting and wealth quintiles in Tanzania- DHS 2010



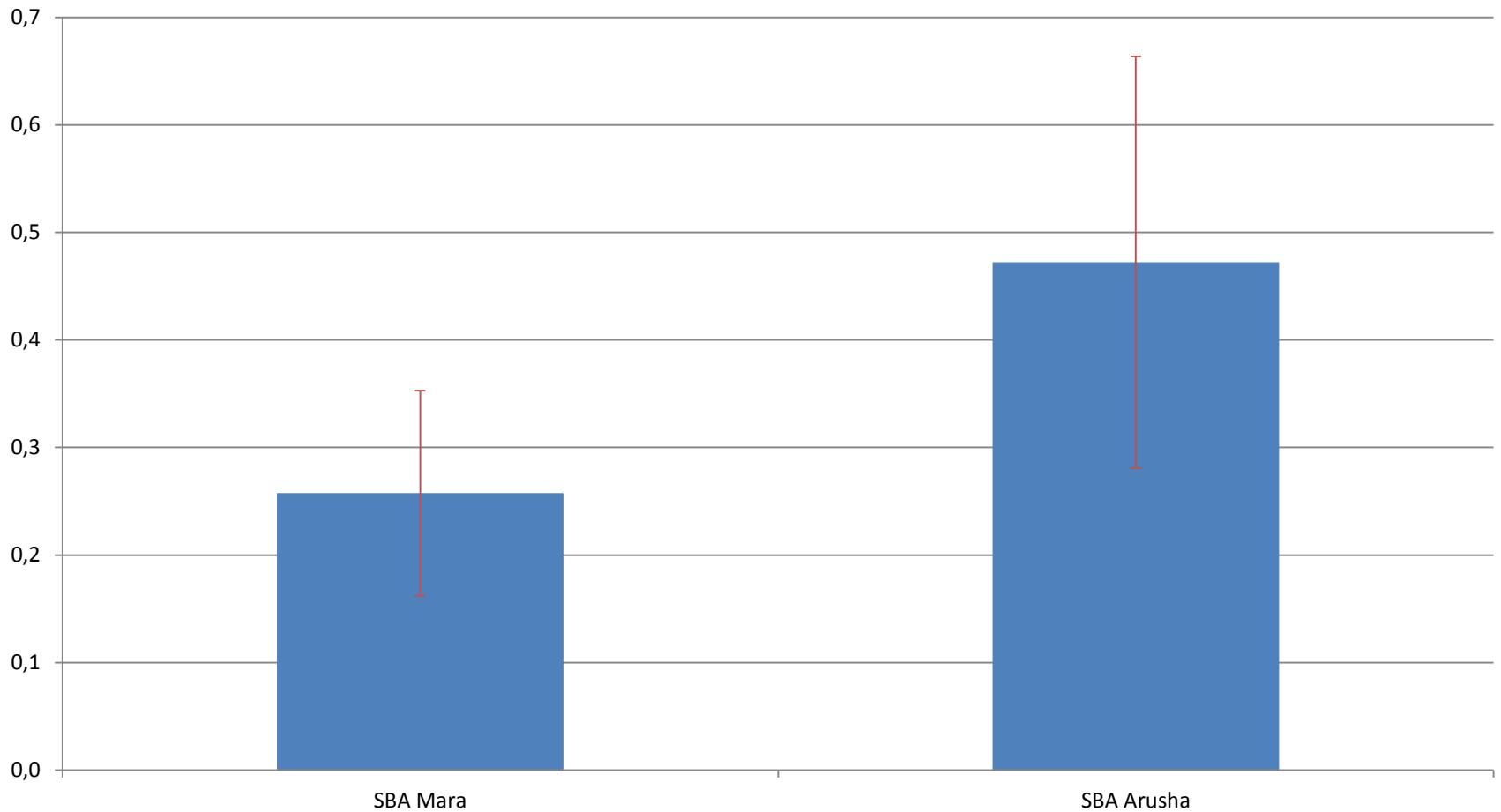
A comparison of selected under-five indicators in two regions of Tanzania



A comparison of selected maternal indicators in two regions of Tanzania



Skilled delivery care coverage: A comparison of two regions in Tanzania



Tanzania Countdown and case study plans & progress

- 1st meeting in Kuala Lumpur in May 2013
- MOHSW, WHO, JHPIEGO, E4A, LSHTM (CD group), other stakeholders
- Key data sets, policy documents and sources of data for MNCH funding identified
- Analysis to be led by LSHTM (E4A TSU group, and CD group) & E4A Tanzania
- Key people already hired and key datasets analysis underway
- Policy document and sources of MNCH funding review to start next week
- Aim that process feed into the national efforts of mid-term countdown progress review (one plan) and health sector review process
- Results available by December 2013
- Case study report available by mid 2014

Thank you!!!!