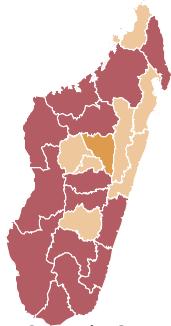


CCI Country Score: 50%



Composite Coverage Index

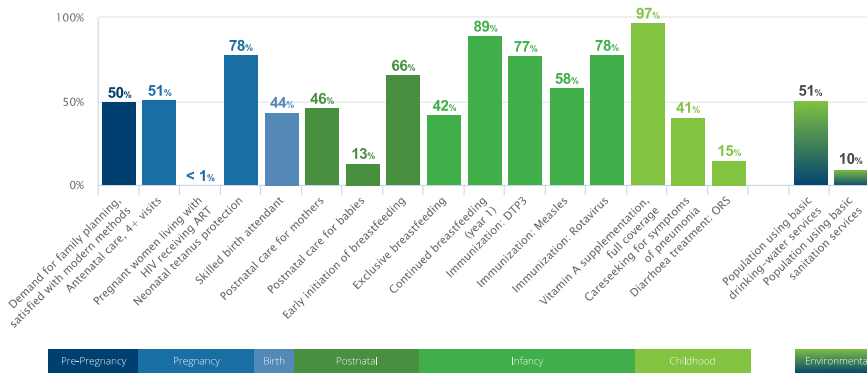


Demographics

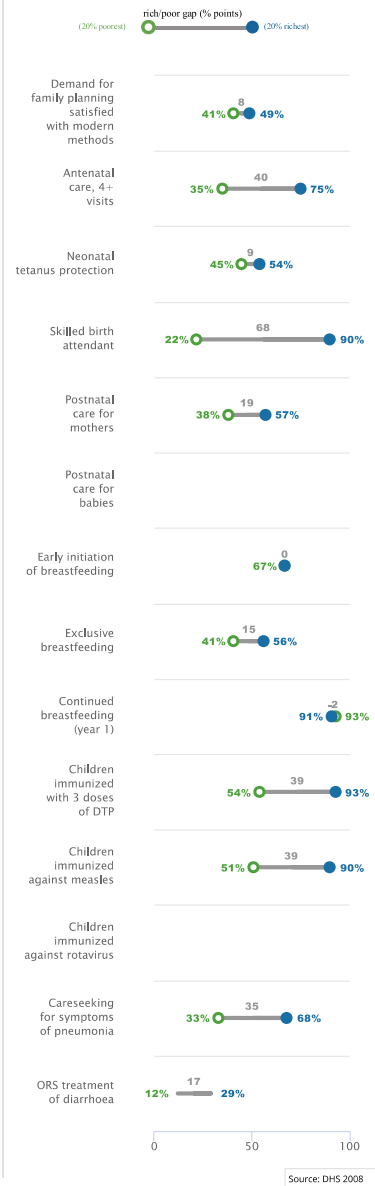
Total Population (000)	24,895	2016	Birth registration	83%	2013
Total under 5 population (000)	3,769	2016	Total maternal deaths	2,900	2015
Total adolescent (10-19) population (000)	5,870	2016	Lifetime risk of maternal deaths (1 in N)	60	2015
Secondary completion rate (upper, females)	6%	2016	Stillbirth rate (per 1000 total births)	18	2015
Total Births (000)	827	2016	Neonatal deaths, as % of all <5 deaths	40%	2015
Total fertility rate (births per woman)	4.2	2016	Total under 5 deaths (000)	37	2016
Adolescent (15-19 years) birth rate (births per 1000 girls)	147	2006	Adolescent (10-19) mortality rate (per 100,000), by sex	155 girls 185 boys	2015

Continuum of Care Coverage

Percentage of those in need receiving coverage of key interventions across the continuum of care



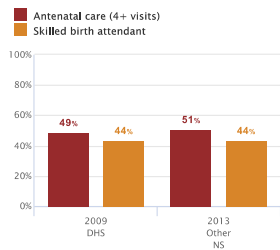
Equity



Maternal & Newborn Health

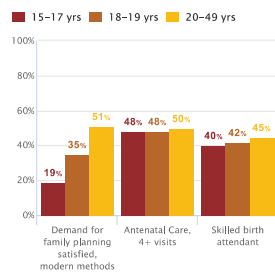
Pregnancy and Delivery Care

Percent women aged 15-49 years with:

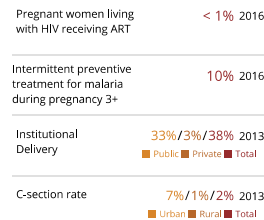


More years of data may be available on the dashboard.

Adolescent Reproductive and Maternal Health



Additional Maternal and Neonatal Health Interventions



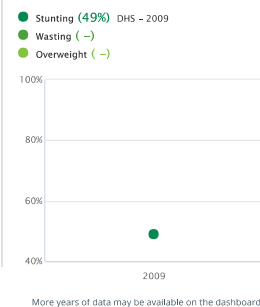
Women's & Children's Nutrition

Essential Nutrition Indicators

Prevalence of anemia in women aged 15-49	37%	2016
Women of reproductive age, short stature	7%	2008
Women (20+) with: BMI <18.5 kg/m2 (thinness)	14%	2016
BMI 25-30 kg/m2 (overweight)	23%	2016
BMI > 30 kg/m2 (obese)	8%	2016
Iron/folic acid supplementation during pregnancy	8%	2008
Low birth weight prevalence	-	-
Vitamin A supplementation, full coverage	97%	2015
Minimum dietary diversity	31%	2013

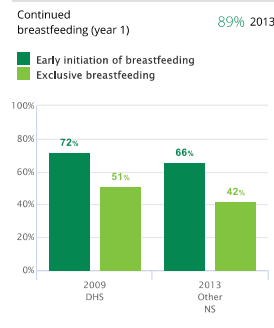
Child Nutritional Status

Percent children under 5 with moderate and severe:



More years of data may be available on the dashboard.

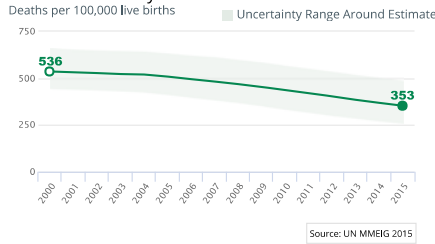
Breastfeeding Practices



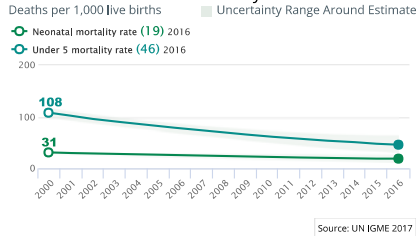
More years of data may be available on the dashboard.

Demographics

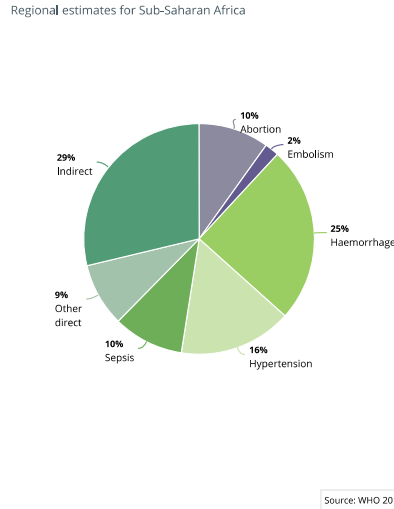
Maternal Mortality Ratio



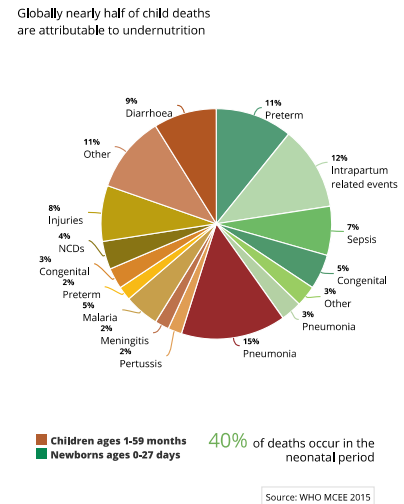
Neonatal & Under-five Mortality Rate



Causes of Maternal Death - 2014

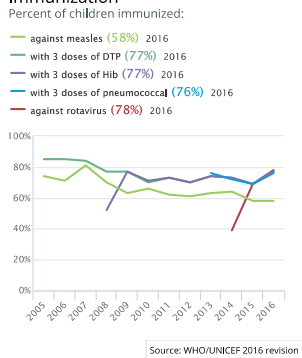


Causes of Death Under-Five - 2015

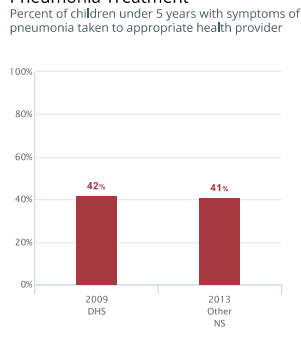


Child Health

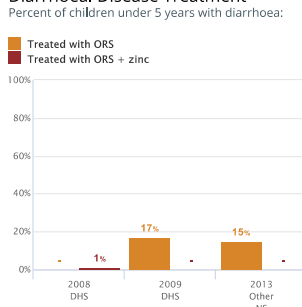
Immunization



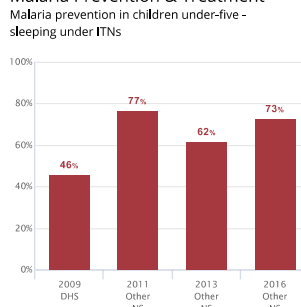
Pneumonia Treatment



Diarrhoeal Disease Treatment



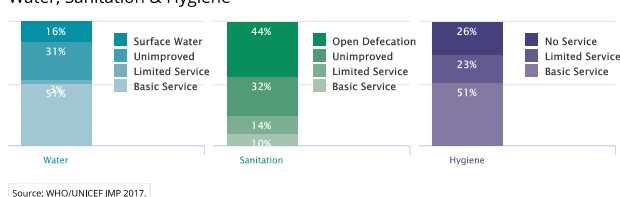
Malaria Prevention & Treatment



Malaria diagnostics in children under-five: 16% 2016  
Population sleeping under ITN or sleeping in a house sprayed by IRS: 71% 2016

Environmental

Water, Sanitation & Hygiene



Policies, Systems & Financing

Legislative Policies

Family planning for adolescents without spousal or parental consent: No Data

Legal status of abortion:
 

- to save a woman's life:
- to preserve physical health:
- to preserve mental health:
- for economic & social reason:
- on request:
- in case of rape or incest:
- in case of foetal impairment:

Maternity protection (Convention 183): No

International code of marketing of breastmilk substitutes: Yes

Legislation on food fortification:
 

- Wheat: NO FORTIFICATION
- Maize: NO FORTIFICATION
- Rice: NO FORTIFICATION

Governance:
 

- Costed national implementation plan(s) for maternal, newborn and child health available: MATERNAL (Yes), NEWBORN (Yes), CHILD (No Data)
- Maternal Death Review 2013:
  - A national policy to notify all maternal deaths:
  - A national policy to review all maternal deaths:
  - A national maternal death review committee:
  - A subnational maternal death review committee:
  - Both national and subnational maternal death review committees:
  - At least biannual meetings of the national maternal death review committee:

Civil society involvement in review of national maternal, newborn and child health programs: No Data

Financing:
 

- Total expenditure on health, per capita: 14 2013
- Government expenditure on health, per capita: 7 2013
- Out of pocket expenditure as % of total expenditure on health: 41% 2013
- General government expenditure on health as % of total government expenditure: 10% 2014
- ODA to RMNCH (US\$): Total: \$154 M 2015, Per capita: \$6 2015

Service Delivery: Life Saving Commodities in Essential Medicine List:

Category	Count
Reproductive Health	0
Maternal Health	2
Newborn Health	2
Child Health	3

National availability of functional Emergency Obstetric Care (% of recommended minimum): 14% 2016

Density of skilled health professionals (per 10,000 population): 3.6 2012

Midwives authorized for specific tasks:
 

- Parenteral antibiotics:
- Parenteral oxytocin:
- Parenteral anti-coagulants:
- Manual removal of placenta:
- Removal of retained products of conception:
- Assisted vaginal delivery:
- Newborn resuscitation: